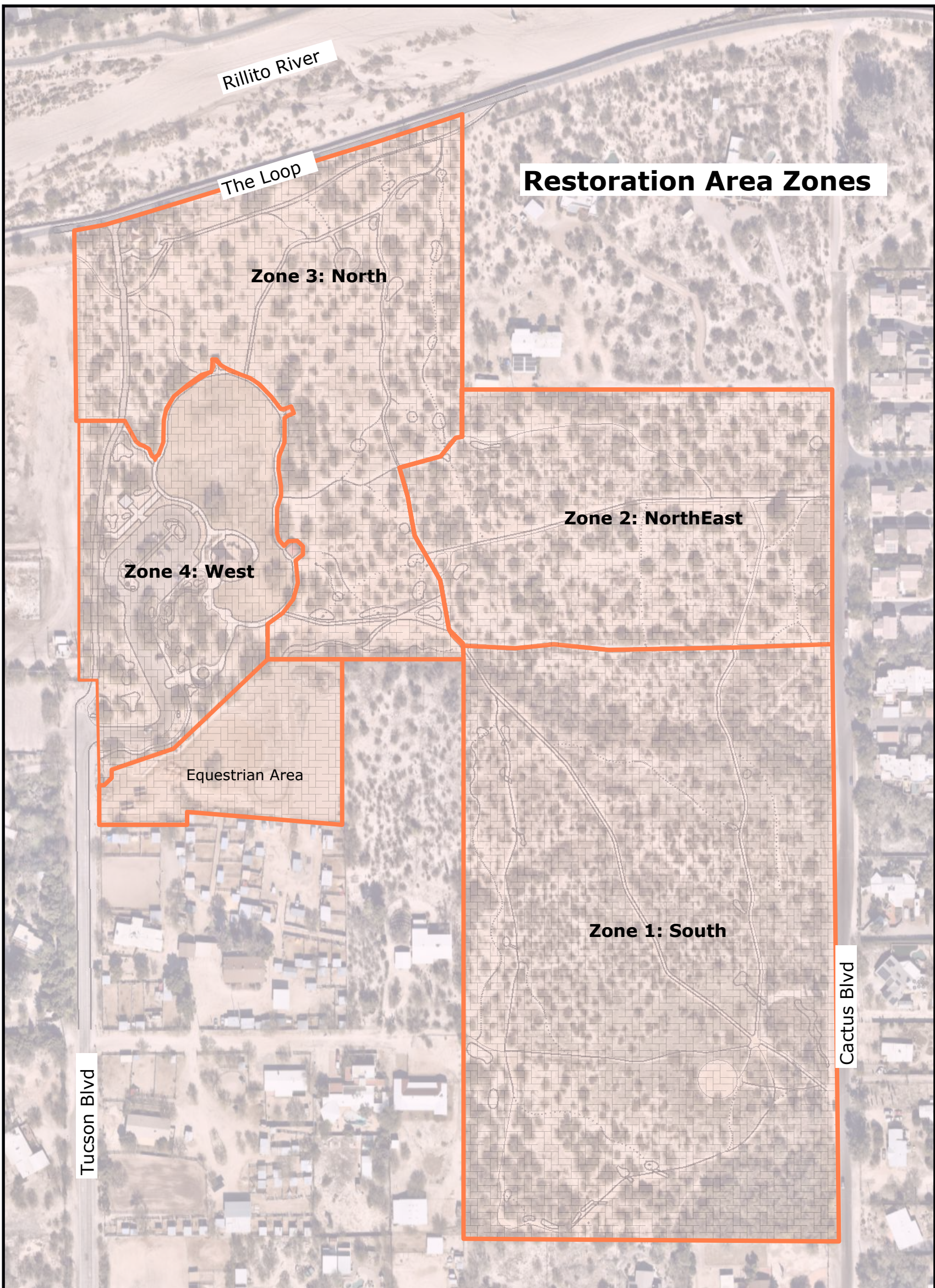


# Rio Vista Natural Resource Park Restoration Plan

3974 N TUCSON BL

**DRAFT 100%**



**Legal description**

SWLY PTN SE4 SEC 20 & N1021.32' E2 NW4 NE4 & N290 E463.32' W493.32' NW4 NE4 SEC 29 39.35 AC T13S R14E

**Owner:**

CITY OF TUCSON  
Parks and Recreation Department  
Capital Planning & Development Unit  
900 S Randolph Way  
Tucson, Arizona 85716  
Parcel ID: 108-24-015A

Attn: Thomas Fisher  
Ph: 520.837.8037  
Email: tom.fisher@tucsonaz.gov

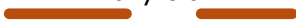

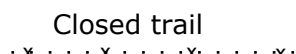












Rio Vista Natural Resource Park ::


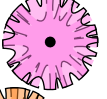


scale: 1:2400

ZONES
ALL

**Symbol Notes**

-  Primary trail
-  Secondary trail
-  Closed trail
-  Trail Closed Habitat Restoration Area Sign
-  Rock-edge trail node
-  Raised Trail 6-12" (with or without rocks, see notes)
-  Rock filter dam
-  1 or 2-panel Sign
-  Major flow path
-  Rain basin
-  Trail drain dip to rain basin
-  Restoration Zone Area
-  Native Hydroseed Area

**Native trees**

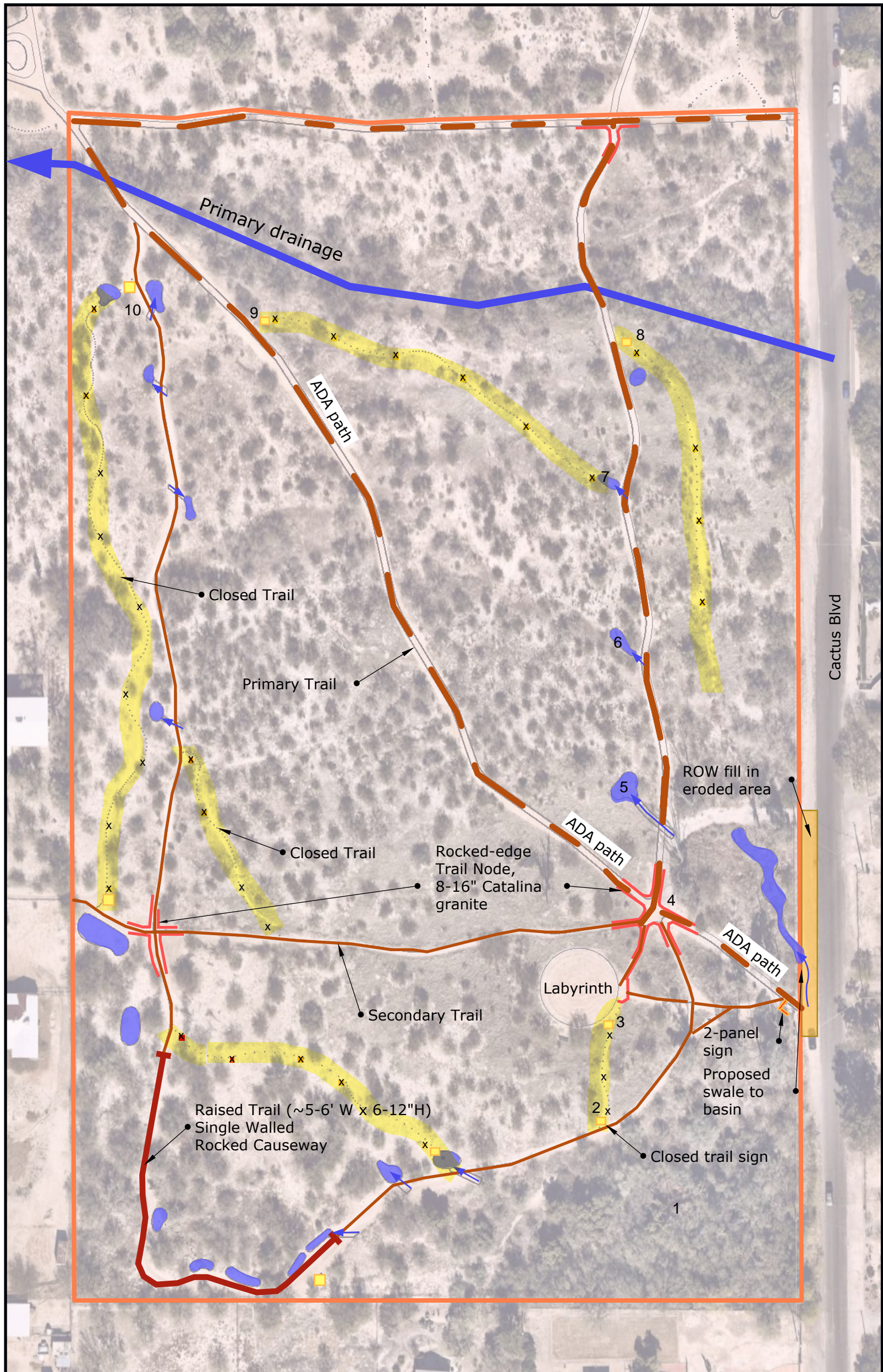
-  *Sambucus Mexicana*, Mexican elderberry
-  *Chilopsis linearis*, Desert willow
-  *Prosopis pubescens*, Screwbean mesquite
-  *Celtis reticulata*, Canyon hackberry

pubescens

# Rio Vista Natural Resource Park Restoration Plan

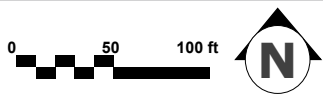
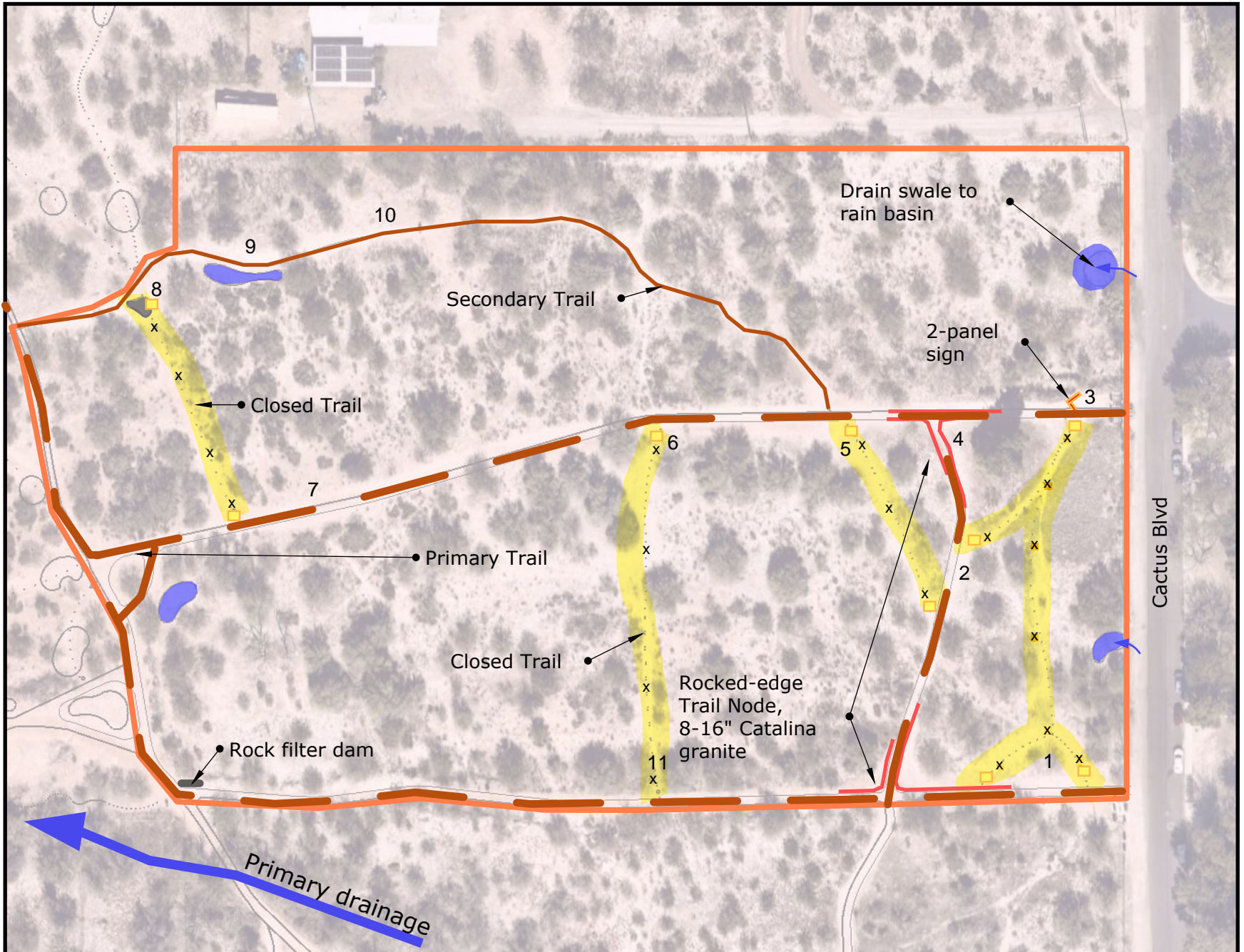
3974 N TUCSON BL

**DRAFT 100%**



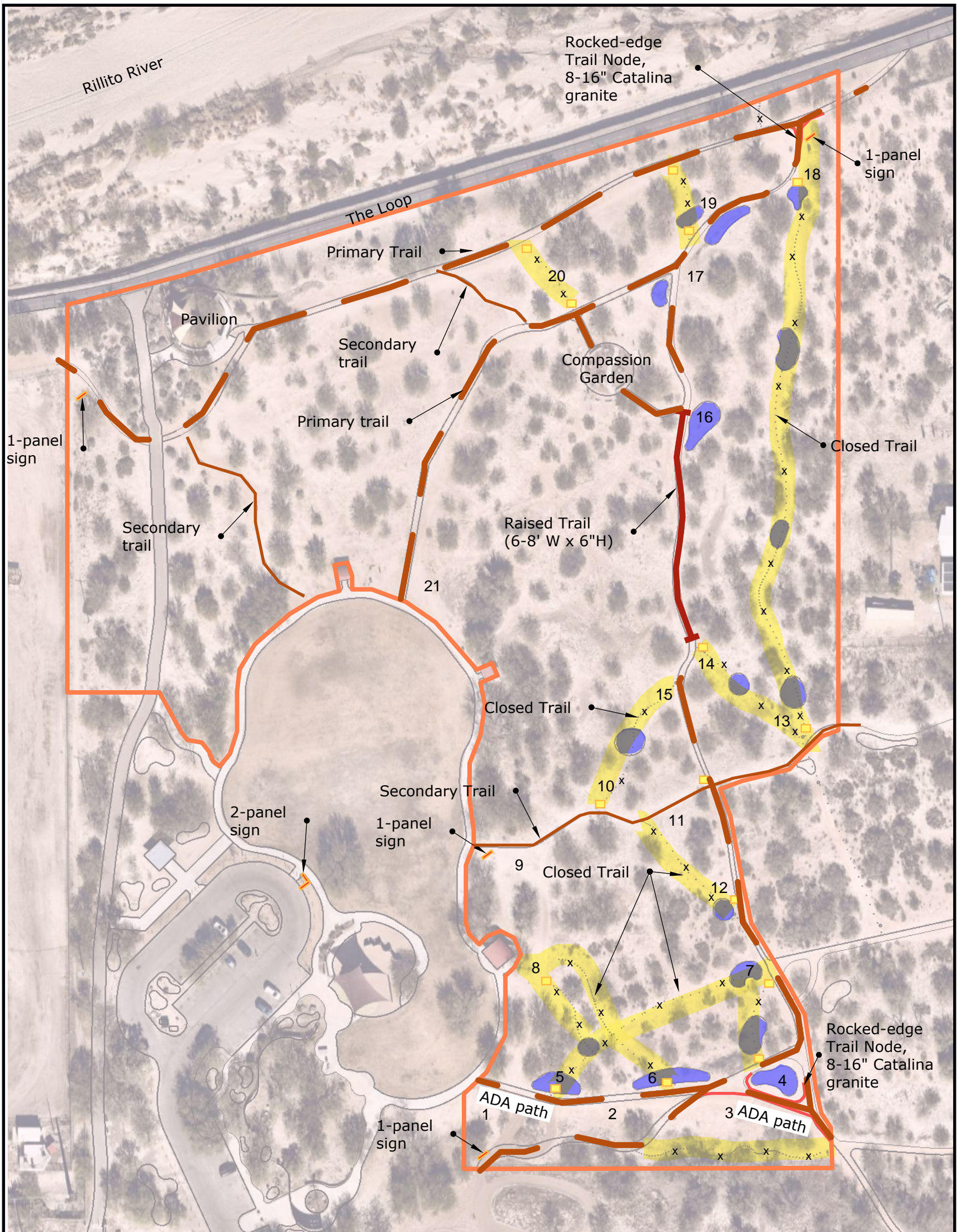
Zone 1: South ::  
scale: 1:1200

<b>Sheet 3</b>
Features



**Rio Vista Natural Resource Park  
Restoration Plan**  
3974 N TUCSON BL

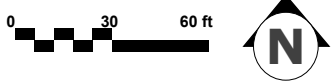
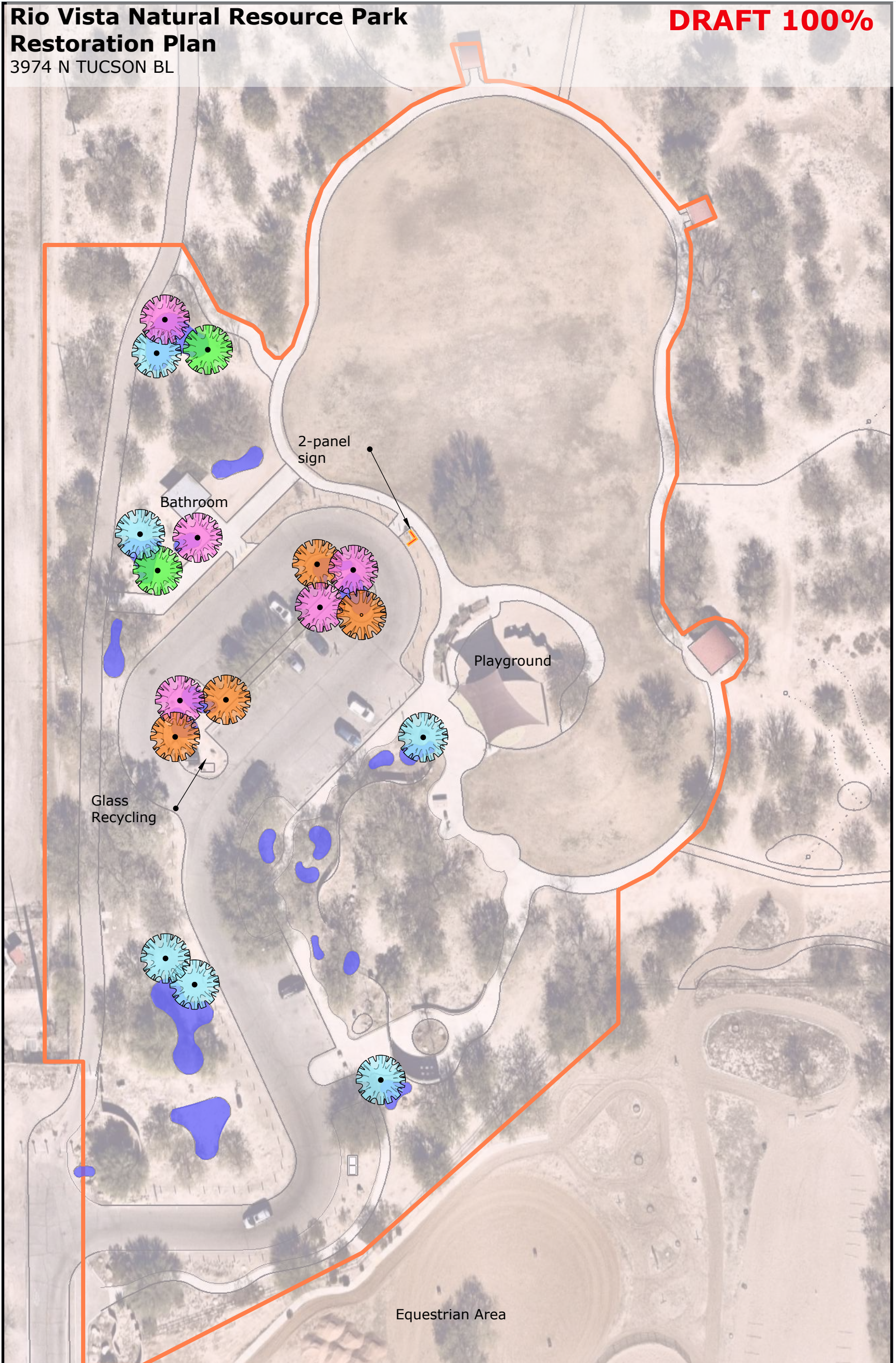
**DRAFT 100%**



# Rio Vista Natural Resource Park Restoration Plan

3974 N TUCSON BL

**DRAFT 100%**



**Zone 4: West**  
scale: 1:720

<b>Sheet 6</b>
Features